

Explorers

Role play:

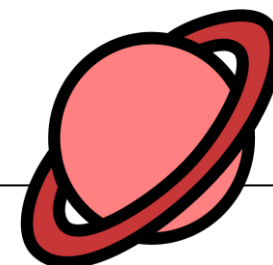
Home corner and then evolving with children's interests.

Expressive Arts & Design (Specific Area)

Dance and Gymnastics
Music (weekly on- going)
Mixing colours and commenting on changes
Acting in role
Constructing and creating own designs and models
Junk model
Clay – manipulating materials

Mathematics (Specific Area)

Comparing numbers (more than, fewer than, equal to)
Composition of 6, 7, 8, 9 & 10
Cardinality of numbers to 10
Subitising numbers to 6
Combining 2 groups
Time through understanding Day and Night
2d shapes
Mass
Capacity
Measure



Literacy (Specific Area)

Little Wandle Letters and Sounds Revised Phase 3 (on- going)
Reading Practise – Little Wandle texts (on- going)
Independent writing activities (on- going)
Writing a sentence.
Listening to different stories and poems.
Acting out a story
Non- fiction writing - information

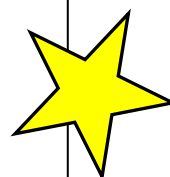
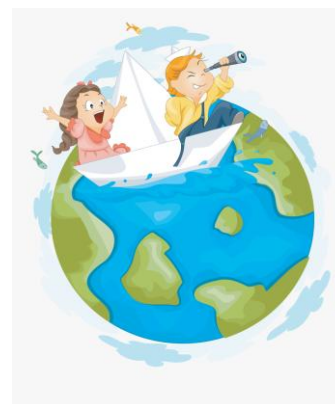


Our goal this half term is:

To be confident to try new activities

Personal, Social & Emotional Development (Prime Area)

Assemblies/ circle times (On-going)
Philosophy for children (on-going)
Star of the week (on- going)
Weekly SEAL- My Feelings
Tapestry News Sharing



Understanding the World (Specific Area)

Construction (on- going)
Forces (Pushing & pulling)
Floating and Sinking
Continuing to look at the changes around us
Looking at similarities between where we live and the wider world.
Exploring our local area and simple maps
Local History and changes



Plans are subject to change to children's needs and interest.

Communication & Language (Prime Area)

Regular circle times and assemblies (on- going)
Star of the week (on- going)
Trick Box
Circle songs/ games (on- going)
Continuous provision- (on going)
Whole class stories (on- going)
Role play area
Following instructions and asking questions (on- going)

Physical Development (Prime Area)

Adventure Playground
Bikes
Games
Brain gym
Gymnastics
Understanding how to be healthy
Fine motor skills activities- using tools with control

